



**AMIT PAPER  
CONSULTANTS & ENGINEERS**

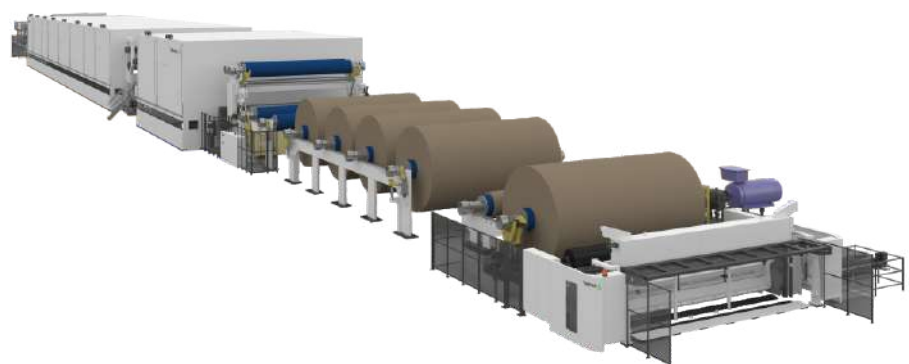


**D.M. ENGINEERS**

**GROUP OF COMPANIES**



**[www.paperconsultants.in](http://www.paperconsultants.in)  
[www.papermillmanufacturer.com](http://www.papermillmanufacturer.com)**



## Who We Are ?



**Mr. HARERAM PANDIT**  
(Director)



**Mr. PRAFUL PATEL**  
(Director)

**Established in the Year 1989, AMIT PAPER & DM ENGINEERS** are stated in year 2013 and is a leader in process efficiency and energy conservation for Process Industry, with over seven decades of experience building steam engineering and control instrumentation solutions. Our unique complementary expertise enables us to engineer customised systems that improve manufacturing processes, conserve energy and are environmentally sustainable. We offer our customers a comprehensive range of services, products and solutions for utilities and process control. We are present in over 50 locations in india, with 5 manufacturing facilities. Our knowledge, innovative solutions, reliable products and global presence make us a trusted partner

## Connect to Your Success with Us

**AMIT PAPER & DM ENGINEERS** are your most trustworthy partner and your first choice for Paper machinery plant parts.

**AMIT PAPER & DM ENGINEERS** are dedicated to provide the world-class products parts. Our value proposition is built upon on the core principle of "Connect to Your Success". This is a common goal we share with our customers. This guiding principle drives us to develop integrated service innovations, which enables us to win in every promising market, and to connect every success in the networking business.



# TURNKEY PROJECTS

**We are providing turnkey projects along with :**

- Civil Engineering
- Boiler
- Electrical
- Mechanical
- Vacuum
- Work Shop
- Paper Machine Section
- Pulping Equipments
- Lab Equipments
- ETP Plants / STP Plant



Excellent designing software with skilled designer to improve the machine quality and work efficiency.

## COMPLETED PROJECT

SHREE NARAYAN PAPER MILL - KHEDA  
RUDRA LAM KRAFT PVT. LTD. - MATAR, KHEDA  
THREE SISTER PULP & PAPER BOARD LLP - ETHIOPIA  
RIYADH COLUMN CARTON FACTORY - SAUDI ARABIA  
ZEEPACK ANGOLA LDA - LUANDA, ANGOLA  
ECO PAPERS PVT LTD - SRI LANKA  
NALAKA PAPER MILLS PVT. LTD. - SRI LANKA

## UPCOMING PROJECT

MAURITIUS	RIYADH
ALGERIA	IRAQ
GHANA	UGANDA
SRI LANKA	HYDERABAD
BANGLADESH	BANGALORE
USA	IVORY COAST
KENYA	ETHIOPIA



## FULL PLANT SUPPLIER CLIENTS

<b>MAHADEV CRAFT PAPER PVT. LTD.</b> (Double Wire - Kraft Paper)	150 TPD
<b>OM SHIVAY SPECIALITY PAPERS PVT. LTD.</b> (Single Wire - Speciality Paper)	100 TPD
<b>PARAM KRAFT PAPER PVT. LTD.</b> (Double Wire - Kraft Paper)	120 TPD
<b>SHREE RUDRALAM KRAFT PVT. LTD.</b> (Absorment Paper)	150 TPD
<b>UMASON PAPER PVT. LTD.</b> (Double Wire - Kraft Paper)	120 TPD
<b>USONS PAPERS LLP</b> (Single Wire - Kraft Paper)	120 TPD
<b>ALIX PAPER LLP</b> (Single Wire - Fluting Media)	100 TPD
<b>TRIDEV KRAFT PAPER PVT. LTD.</b> (Single Wire - Kraft Paper)	100 TPD
<b>ARIHANT AUTO CORRUGATION PVT. LTD.</b> (Single Wire - Absorment)	100 TPD

## MODIFICATION PLANT

<b>KARNATAKA PAPER INDUSTRY</b>	- KARNATAKA
<b>SUKRAFT PAPER MILLS PVT. LTD.</b>	- RAIPUR
<b>SUKRAFT PAPER PVT. LTD.</b>	- NASIK
<b>SUKRAFT RECYCLING PVT. LTD.</b>	- GOA
<b>SWASTIK PULP &amp; PAPER PVT. LTD.</b>	- NASIK
<b>SURYANSH PAPER</b>	- CHENNAI
<b>JAY SOMNATH PAPER MILL</b>	- GUJARAT
<b>BRIOTA PAPER LLP</b>	- GUJARAT
<b>KYATI INDUSTRIES PVT. LTD.</b>	- GUJARAT
<b>ORCHID LAMINATES PVT. LTD.</b>	- KARNATAKA
<b>CLASSIC PAPERS</b>	- NIZZAMABAD



## OUR PROJECTS



Eco Papers Pvt. Ltd.  
Sri Lanka



NALAKA PAPER  
Sri Lanka



THREE SISTER  
Ethiopia



AL DEWAN PAPER  
Saudi Arabia



RCCF  
Saudi Arabia



BARGUBA PLC  
Ethiopia



SHREE NARAYAN PAPER  
Kheda, Gujarat



Shree Rudra Lamkraft Pvt. Ltd.  
Matar, Gujarat



ROTOCI IVORY COST  
West Africa



ANGOLA  
Center Africa

## ACHIVEMENT

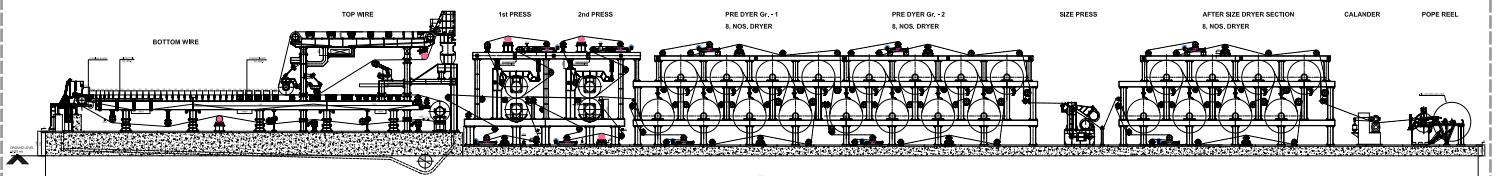
### TISSUE PAPER MAKING PLANT IN SRI LANKA

We inaugurated First Tissue Paper Making Plant in Sri Lanka. Nalaka Paper Mills Pvt Ltd, is one of our Sincere Clients in Sri Lanka. We have recently Achieved The Great Success Inaugurating Tissue Making Plant in Nalaka Paper Mills Pvt. as Nalaka Tissue Plant, Sri Lanka this Year. We have Regularly Focussed on Expanding of Nalaka Paper Plant and Shared All The Capacity Expansions, technical upgrades and new Machinery set up in The Past Years. We believe in Providing Highly Specialized Solutions for Global Pulp and Paper industry With A Mission to Help Our Clients Achieve Significant, Sustainable Gains In Business Performance.

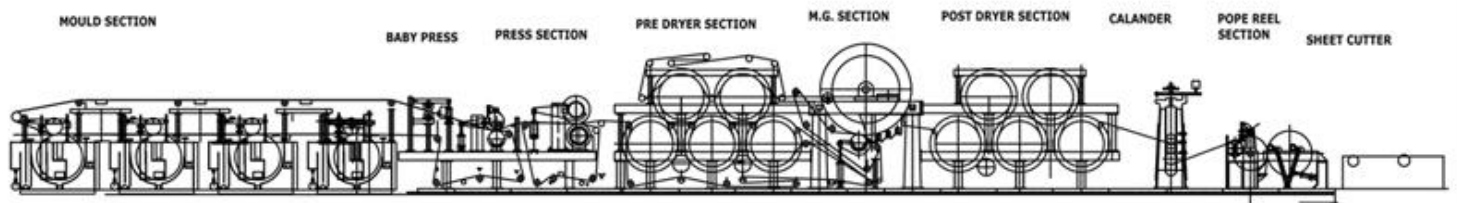




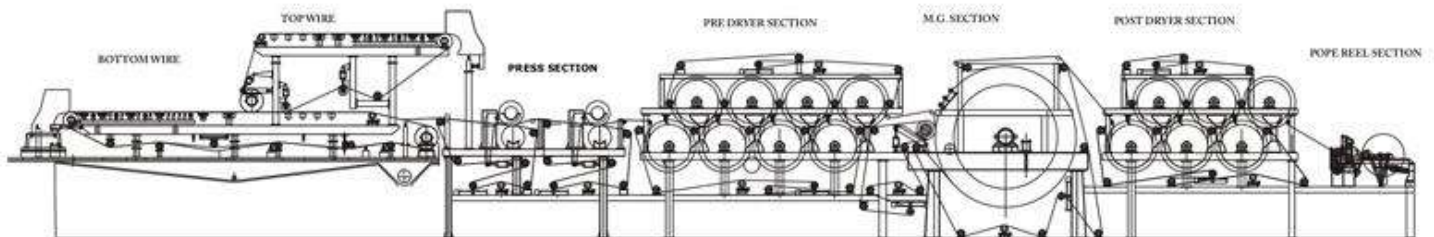
## TWIN WIRE WITH MF MACHINE



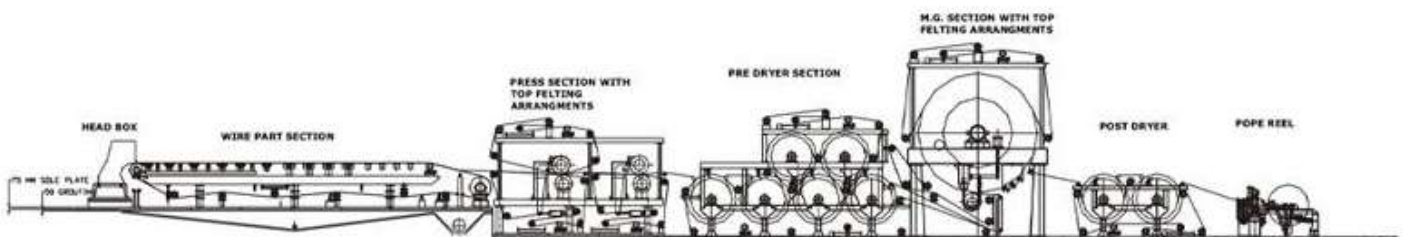
## MOULD MACHINE



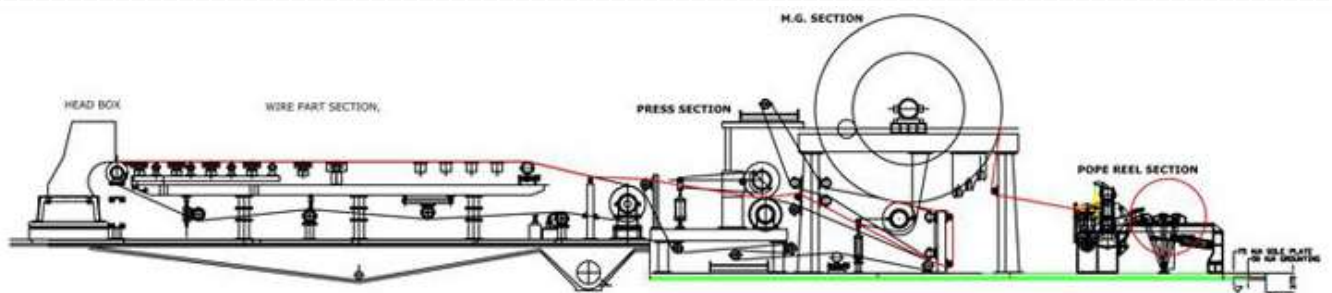
## TWIN WIRE WITH MG CYLINDER MACHINE



## FOURDRINIER WIRE PART MACHINE

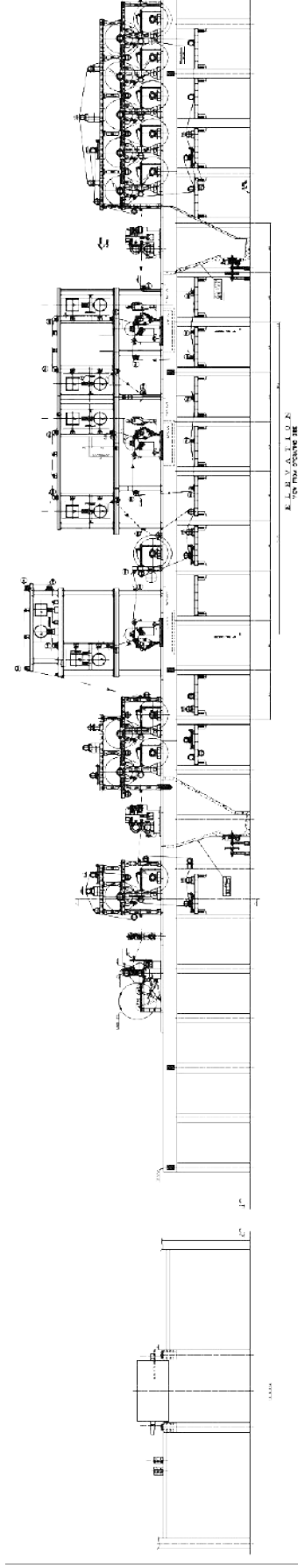
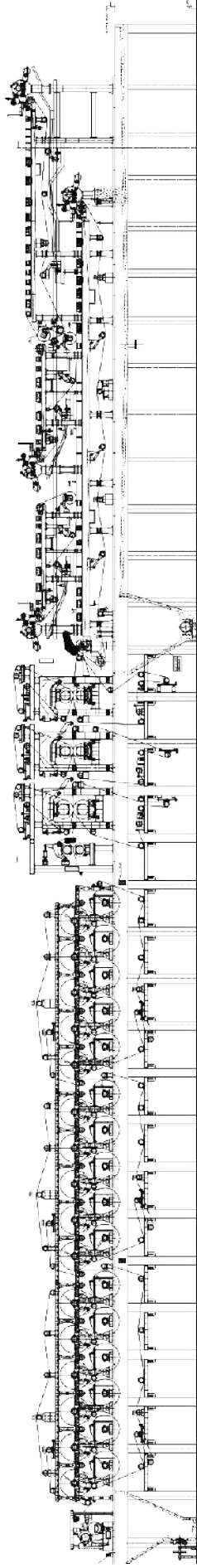


## YANKEE MACHINE

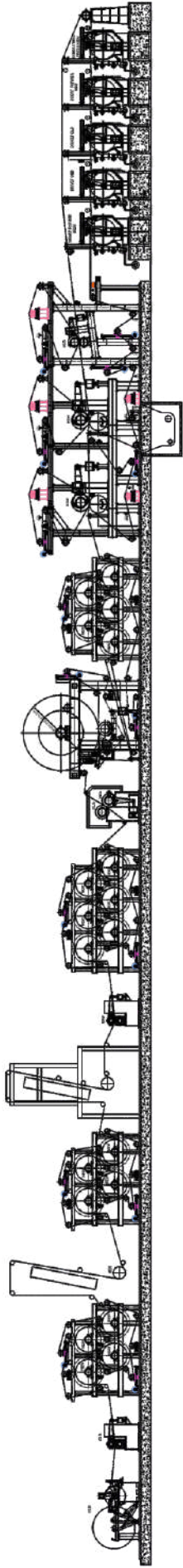




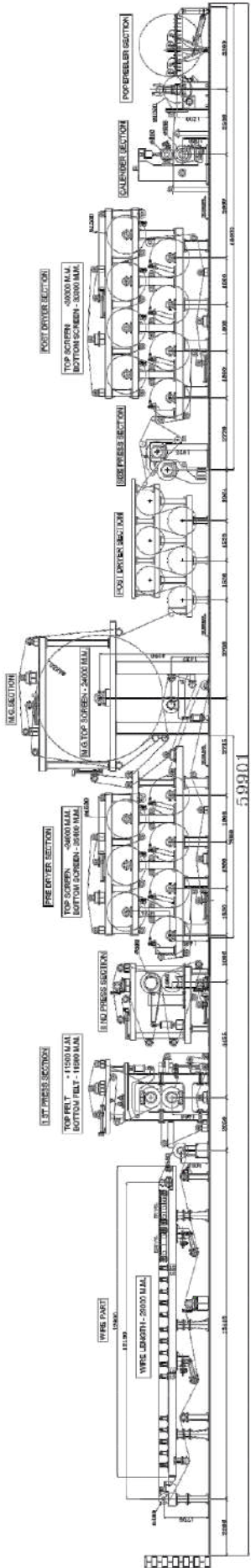
## FOUR WIRE PART MACHINE



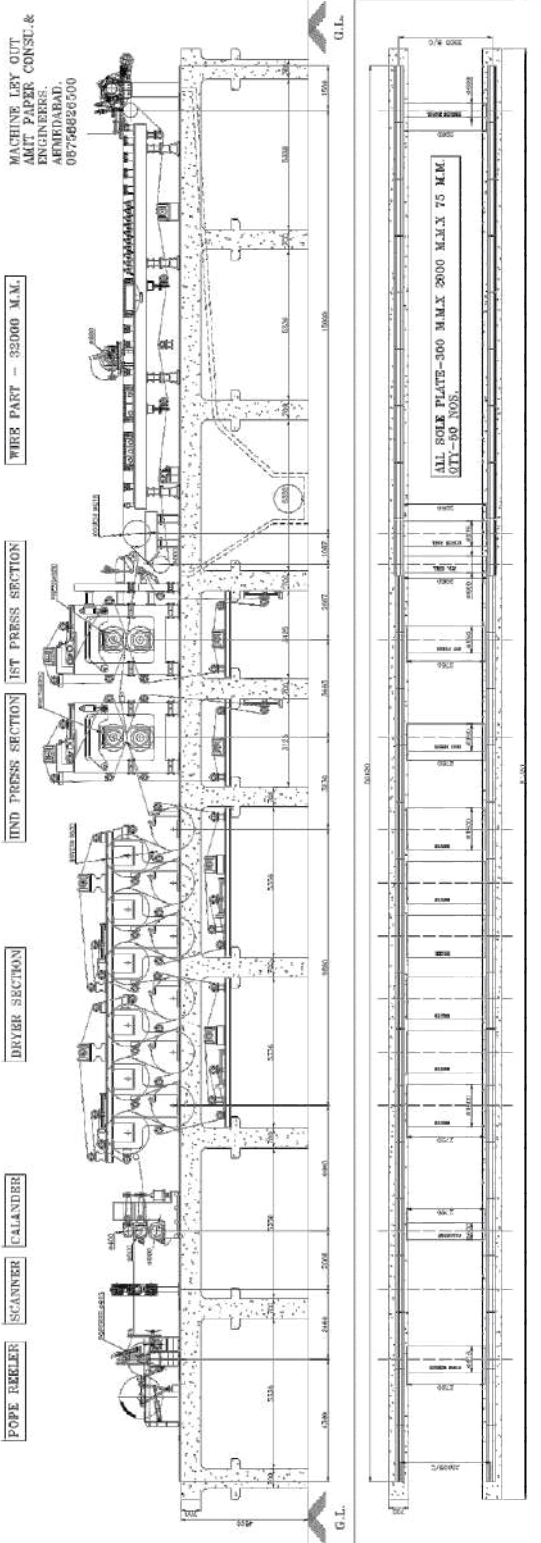
# DUPLEX BOARD MACHINE



# PAPER MACHINE LAYOUT



# ABSORBENT KRAFT PAPER MACHINE



**SECTION AA**

SECTION 4-4

7250 DRIVE SECTION

7900

16.00 M LVL  
MONITOR LEVEL

15.00 M LVL  
MAIN SHED CENTRE LEVEL

8.00 M LVL  
LEAN ROOF LEVEL

2.40 M LVL  
BRICKWORK LEVEL

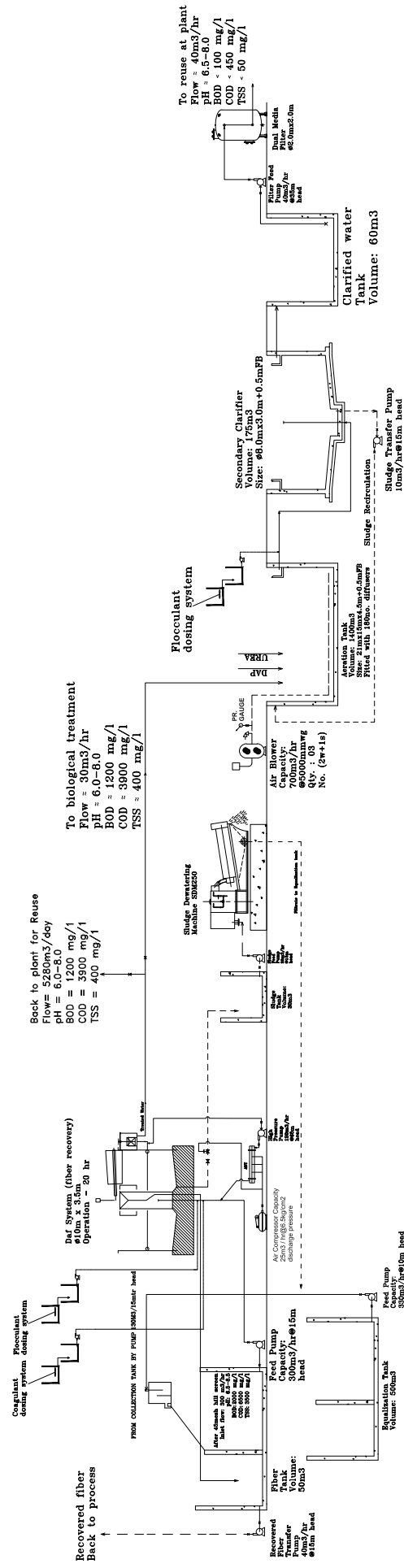
0.00 M LVL  
GROUND FLOOR LEVEL

**ELEVATION AA**

## ELEVATION AA

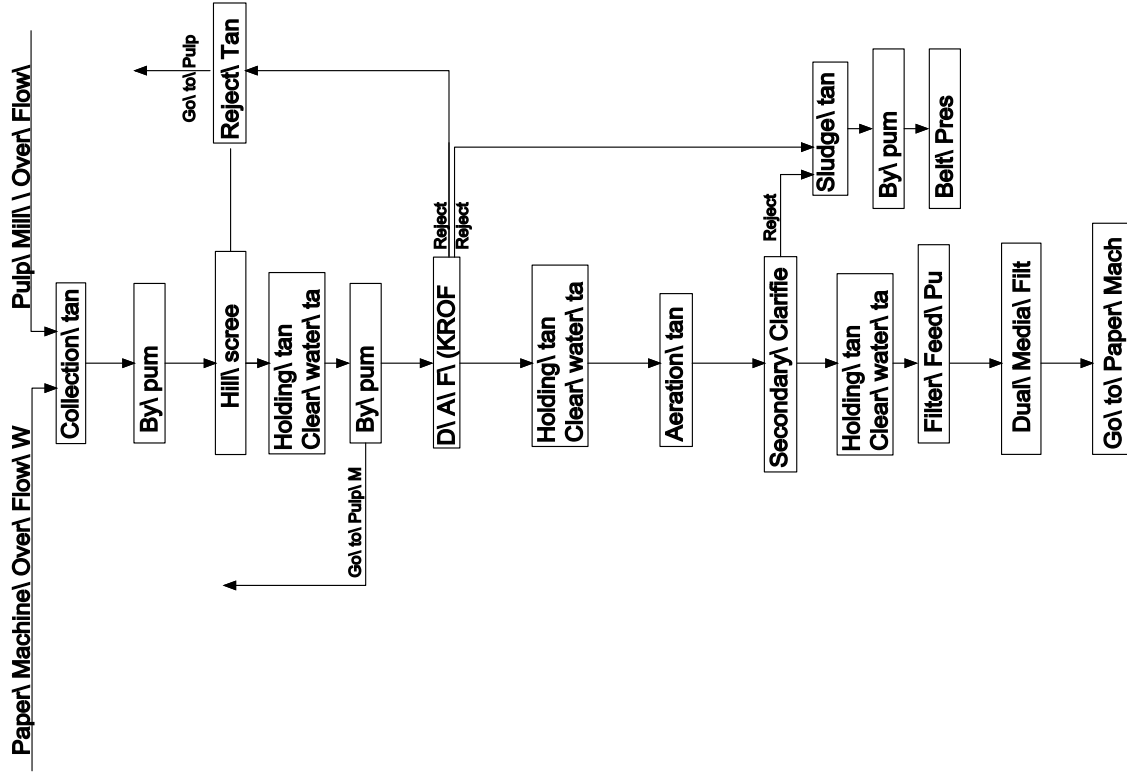


## EFFLUENT TREATMENT PLANT (ETP LAYOUT)

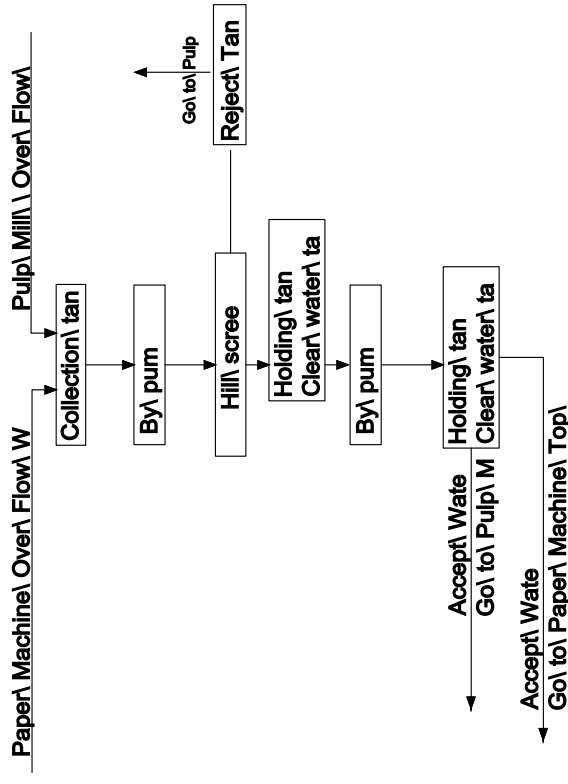


# ETP PLANT LAYOUT

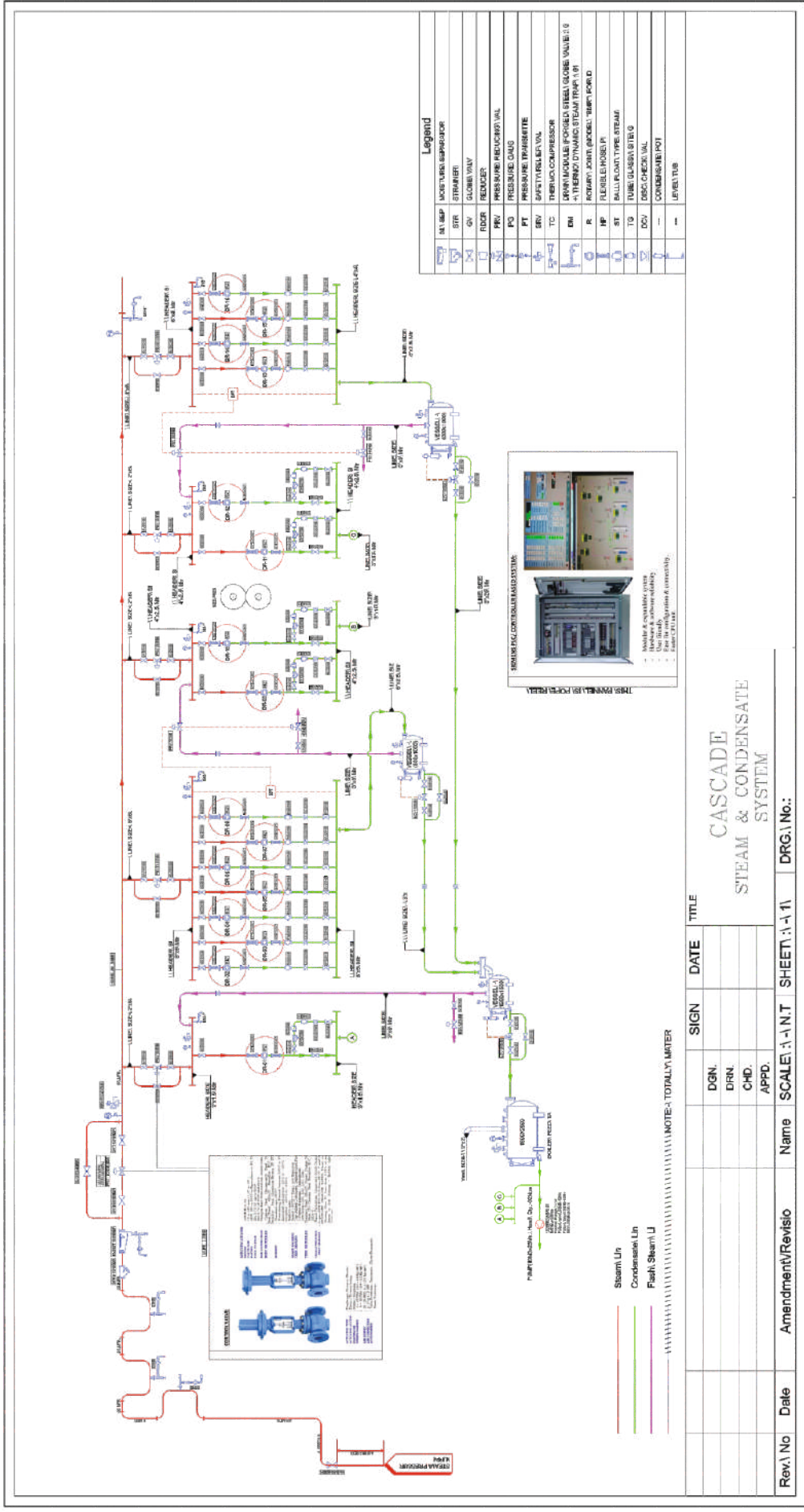
## Bottom Layer



## Top Layer

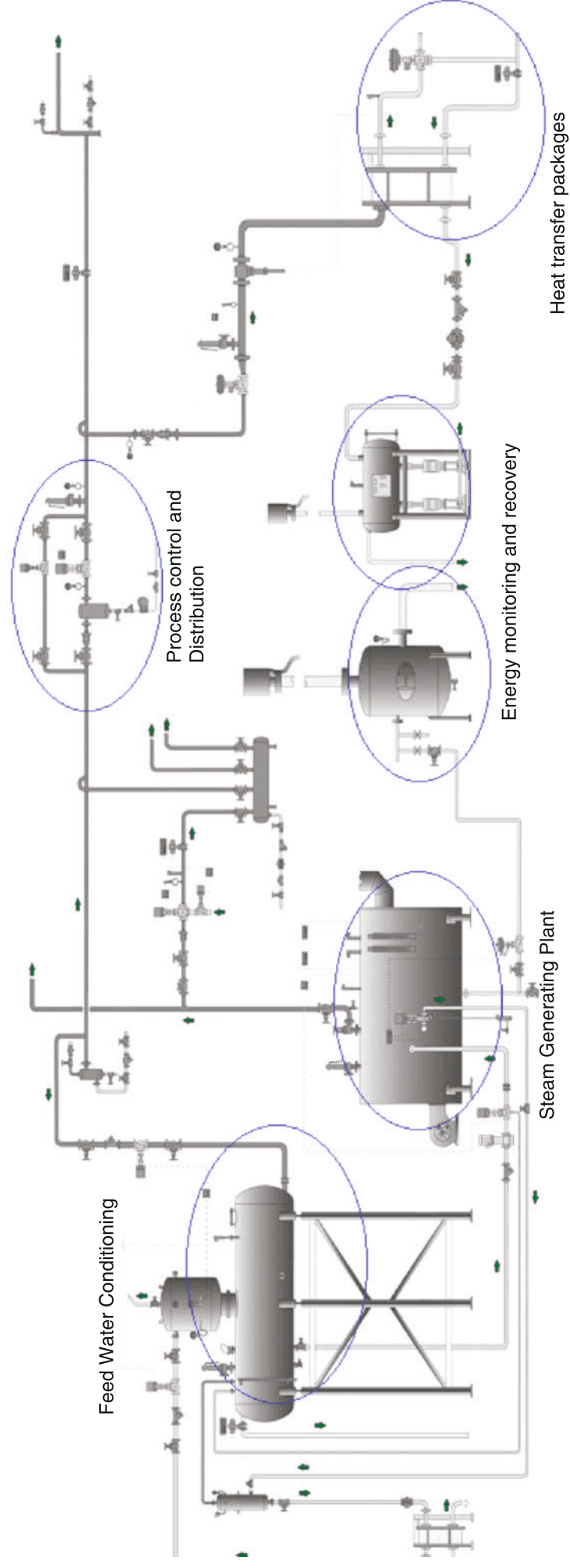


# STEAM & CONDENSATE RECOVERY SYSTEM CASCADING SYSTEM



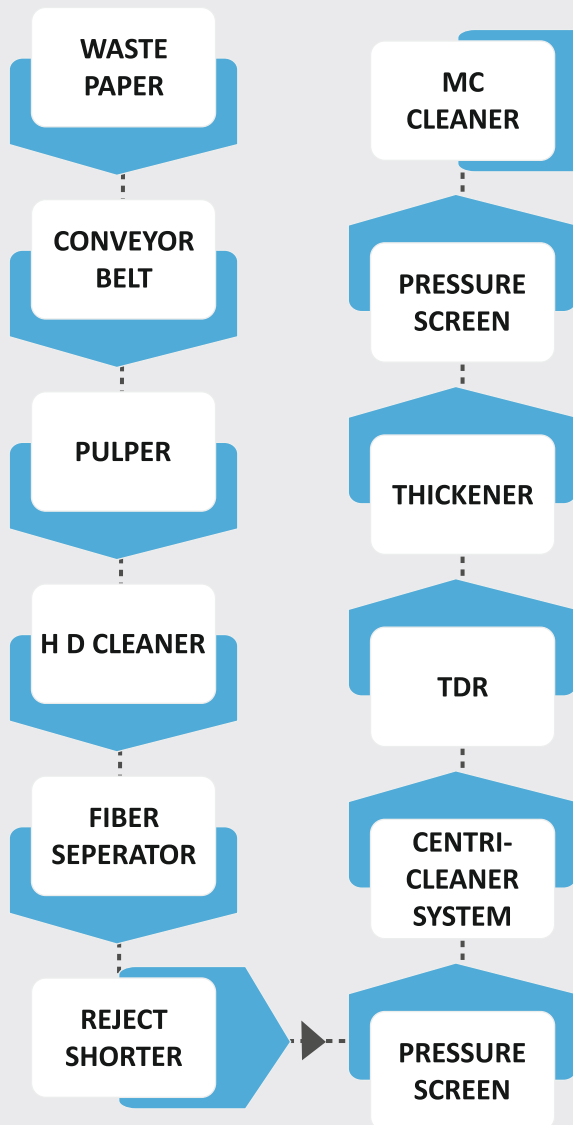


# STEAM & CONDENSATE RECOVERY SYSTEM

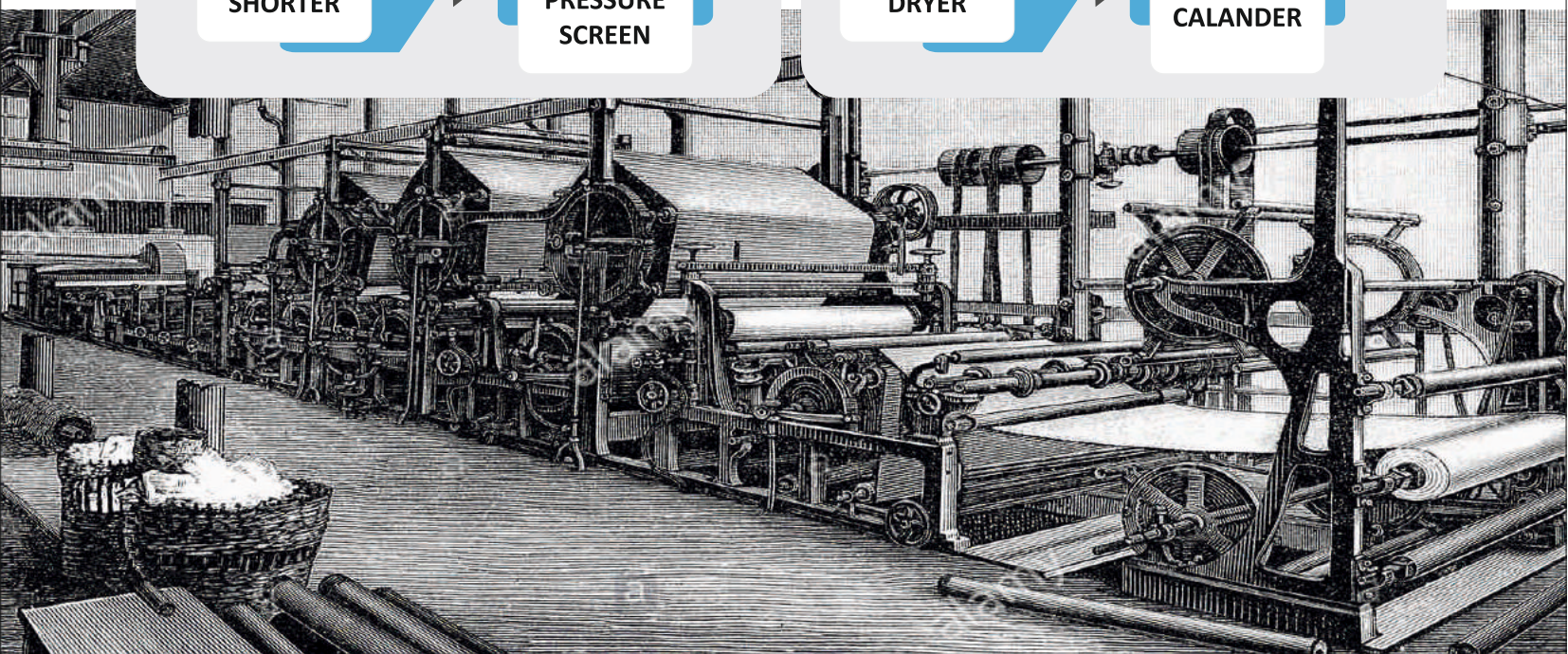
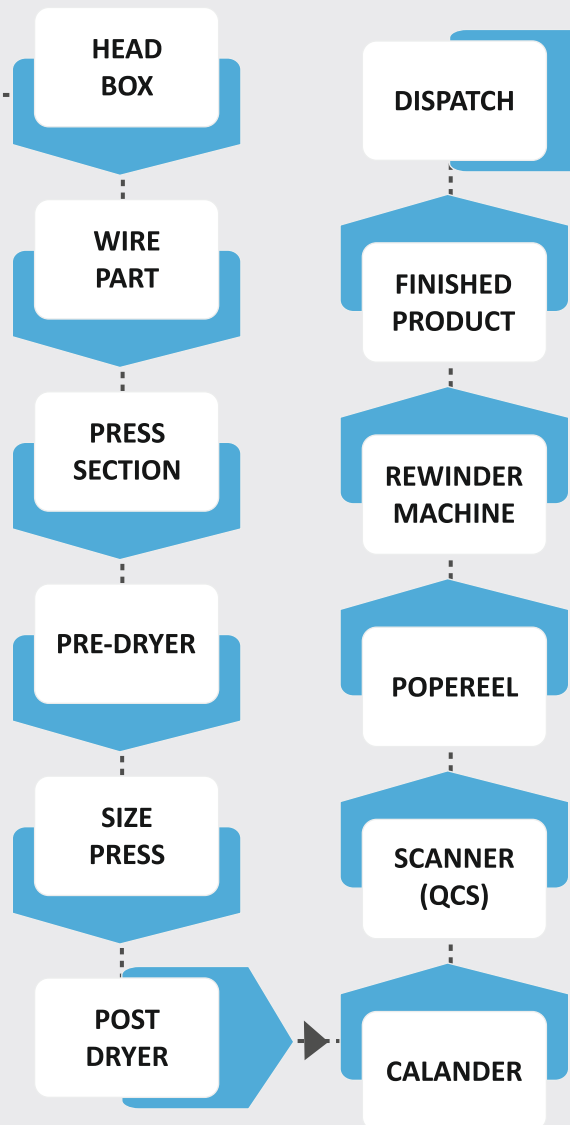


# PRODUCTION PROCESS

## PULPING SECTION

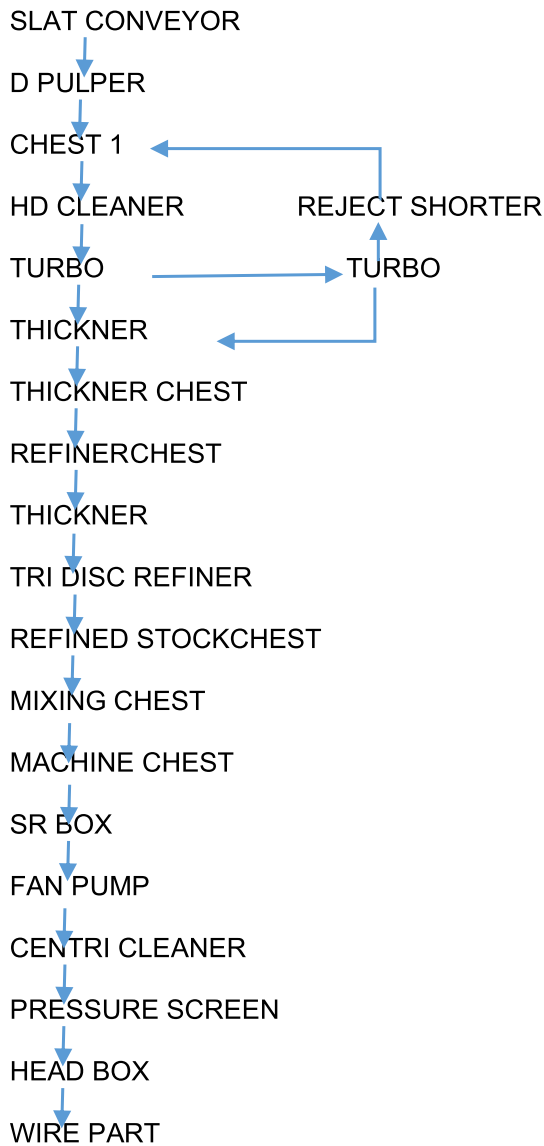


## MACHINE SECTION

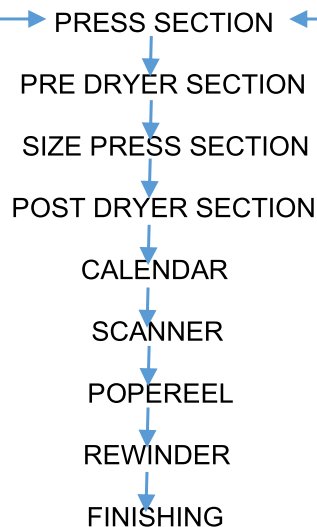
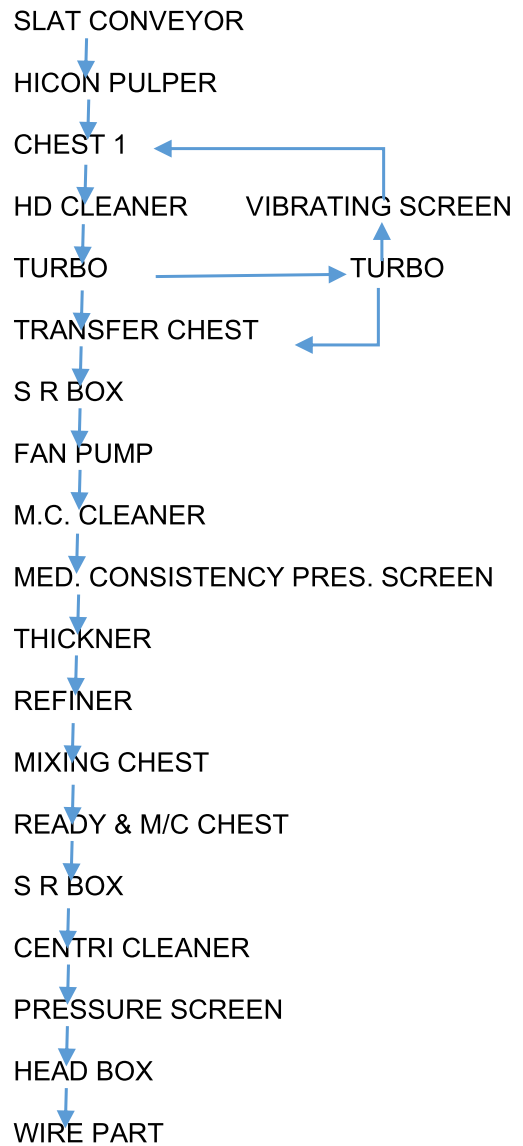


## DOUBLE LAYER FLOW DIAGRAM

### BOTTOM LAYER



### TOP LAYER





## WE CAN SUPPLY THE FOLLOWING CHEMICALS

1. Ferric alum (Alum Powder)
2. Fortified Rosin (Liquid)
3. Gum Rosin N grade (Solid)
4. Cationic Rosin (Composite)
5. Caustic Soda Flakes
6. Hydrogen Peroxide
7. Bleaching Powder
8. Titanium Dioxide
9. AKD
10. Enzyme
11. Modified and Cationic Starch
12. Coagulant
13. Flocculant
14. PAC (Poly Aluminium Chloride)
15. Defoamer
16. Surface Sizing Agent
17. Akali Boil out chemicals
18. Copper Sulphate
19. Retention Aid
20. Calcium Carbonate
21. INACIDE TAA
22. INABROM AB
23. DSR
24. Bismark Brown
25. Golden Yellow
26. Methylene Blue
27. Acid Orange
28. Clay
29. Calgon Powder
30. Sodium Chloride
31. Sodium Hypo Chlorite
32. Sodium Silicate
33. Urea (Carbamide)
34. Formaldehyde
35. Ferric Chloride
36. Sodium Meta bisulphite
37. Tapioca Starch
38. Sodium Hexa Meta Phosphate
39. KAOLIN (N450)
40. Dedecyl Benzene Sulfonate
41. All Dyes

### FOR TISSUE MAKING PAPER :

- BIOCOL
- WSR
- DSR
- BENISOFT
- HYPO
- SOAP DI
- Caustic Soda
- PEO (Polyethylene Oxide)
- Dry Strength Resin
- Wet Strength Resin
- OBA
- Deformer Water Based
- Soft Coat
- Hard Coat
- Polyelectrolyte for ETP
- Carboxymethyl Cellulose

### WATER TREATMENT PLANT CHEMICALS :

- Caustic Soda Flakes
- PAC (Poly Aluminium Chloride)
- Ferrous Sulphate

### Paper coating chemicals for NCR, Thermal Paper and Soon :

- MICROCAPSULE (BLUE & BLACK)
- RESIN COLOR DEVELOPER
- SBR LATEX
- DISPEX
- SPACER
- ANTIFOAM
- Water Repellent Agent
- Hollow Ball Resin

# WE CAN SUPPLY THE FOLLOWING EQUIPMENTS

## Paper making Machine Range from 10 to 400 TPD TURNKEY PROJECTS :

- Fourdriner Paper Machine
- Cylinder Mould Paper
- Tissue Paper
- Crescent Former Tissue
- Suction Former Tissue
- Kraft Paper Machine
- Corrugated Paper Machine
- A4 Copy Paper Machine
- Writing/Printing Machine
- Offset Paper Machine
- Newsprint Paper Machine

## RANGE OF STOCK PREPARATION :

- Conveyor (Belt, Slat)
- Pulper (ATS Type, Hydro, D Type, High and Low Consistency Pulper, Dilution)
- Decker Thickener, PDF and Folding Thickener, B2 type Thickener
- Centricleaner
- Chest Agitator
- Turbo Separator
- Coarse Screen
- Pressure Screen
- Vibrating Screen
- Pressure Screen (Medium, Low, Washing Cycle)
- High Density Cleaner
- Hot Dispensor System
- Deinking Unit
- Tri Disc Refiner
- Poly Disc Filter
- Fractionator
- Horizontal Reject Shorter, Fiber Shorter
- Detrasher
- Grapple
- Trommel Screen
- Ragger
- Trashwell
- Fiber Saver
- Junk Trap
- Rope Cutter
- Stock Regulation Box

## RANGE OF PAPER MACHINE :

- Bottom Wire Assembly  
(Headbox – Pressurized, Opentype, Hydraulic)
- Top Wire Assembly  
(Headbox – Pressurized, Open type, Hydraulic)
- Wire Part
- Press Section (Plain, Blind Drill)
- M G Cylinder
- Dryer Section
- Size Press with Kitchen
- Calander
- Popereel with Tambour Roll
- Slitter Rewinder
- Sheet Cutter
- Complete Drive Arrangement (individual and Silent Drive)
- Sole Plate
- Couch Pit Agitator
- Former - R.F, VAT
- Rope Carrier System

## OTHER AUXILIARY EQUIPMENTS

- All Stock and ETP Pump
- Vacuum System with Separator
- Air Compressor
- EOT Crane
- Laboratory
- Workshop
- Weight Bridge Scale Unit
- ETP (Fiber Recovery Unit)
- Boiler (FBC, COAL BASED, DIESEL FIRE, ETC)
- Fire Hydrant
- Forkclip and Tractor (MATERIAL HANDLING)
- Steam condensate system
- Electrification
- C Oil Hydraulic System
- Platform and Ladder
- Machine Clothing (Felt and Wires, SLDF Screen)
- All Pipeline, Valve, Panel, Cable with Drive
- Scanner
- Core Pipe Making Machine
- Reel Stretch Rapping Machine
- Consistency Regulator
- Basic Weight Valve
- Hardware Material

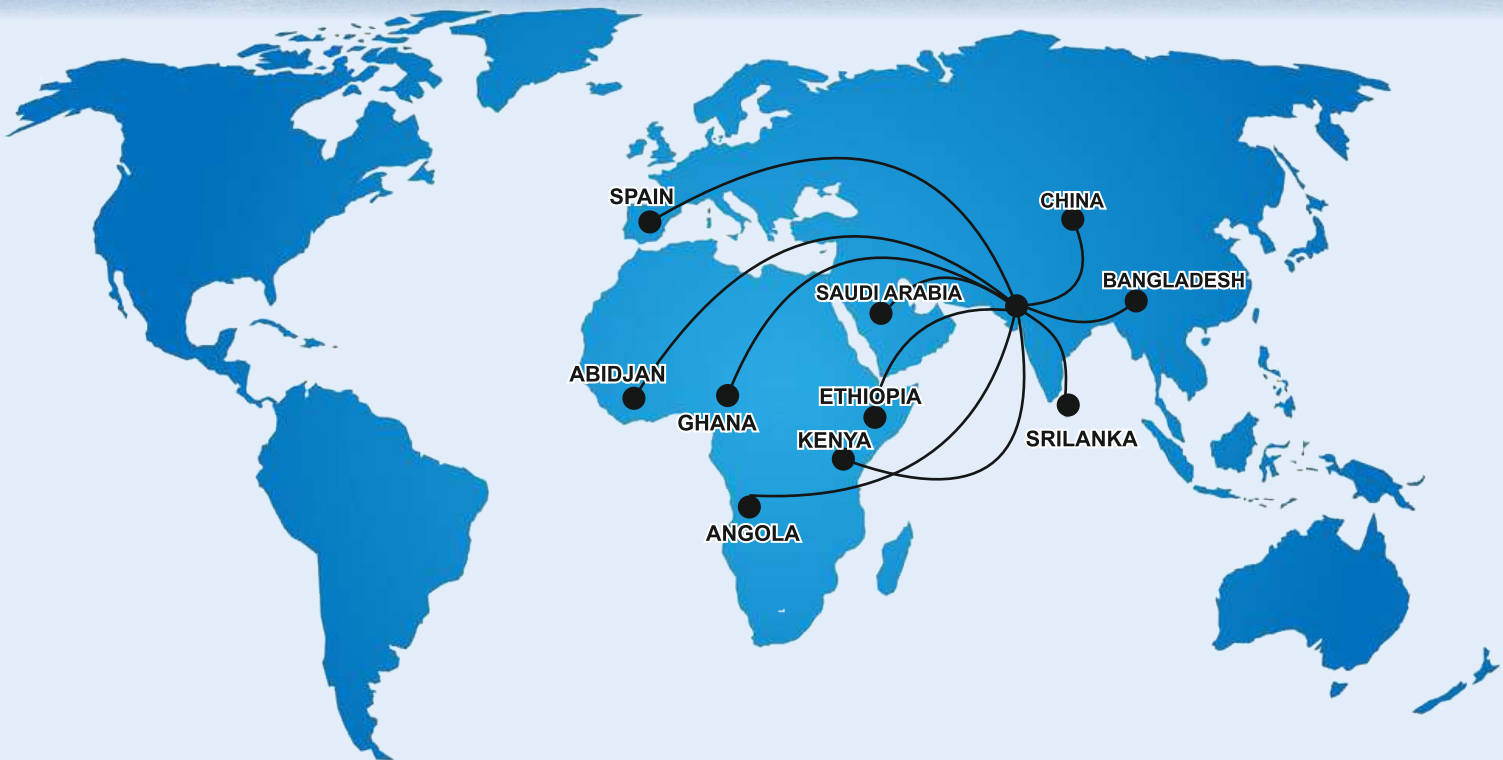
## CLIENTS CORNER

### FOREIGN PROJECT

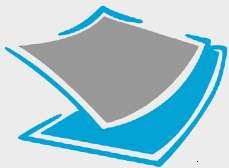


### INDIAN PROJECT





## GROUP OF COMPANIES



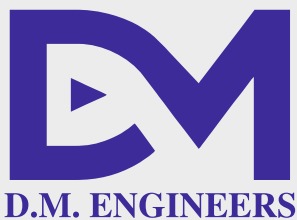
ISO 9001:2015 Certified

## AMIT PAPER CONSULTANTS & ENGINEERS

Paper Machine Manufacturing, Import-Export (Chemical, Spare parts),  
Man-power Supply Overseas and Consultancy Service Provider



**Corp. Office :** 5, Third Floor, Aadharshila Flat, Nr. Uttam Nagar Garden,  
Maninagar, Ahmedabad-380008, GUJARAT, INDIA. Ph. +91-88669 55262,  
Cell : +91-8758826500 Email: pandit.hareram123@gmail.com



## D.M. ENGINEERS

**Manufacturer & Exporter of Pulp & Paper Mill Machinery**

Plot No. 89, Nandanvan Industrial Park-1, Bakrol - Bujrang,  
Ahmedabad-382433, Gujarat.

Contact us : +91 6358819225 | +91 9687819225

Email: dmengineers2019@yahoo.com • web: papermillmanufacturer.com